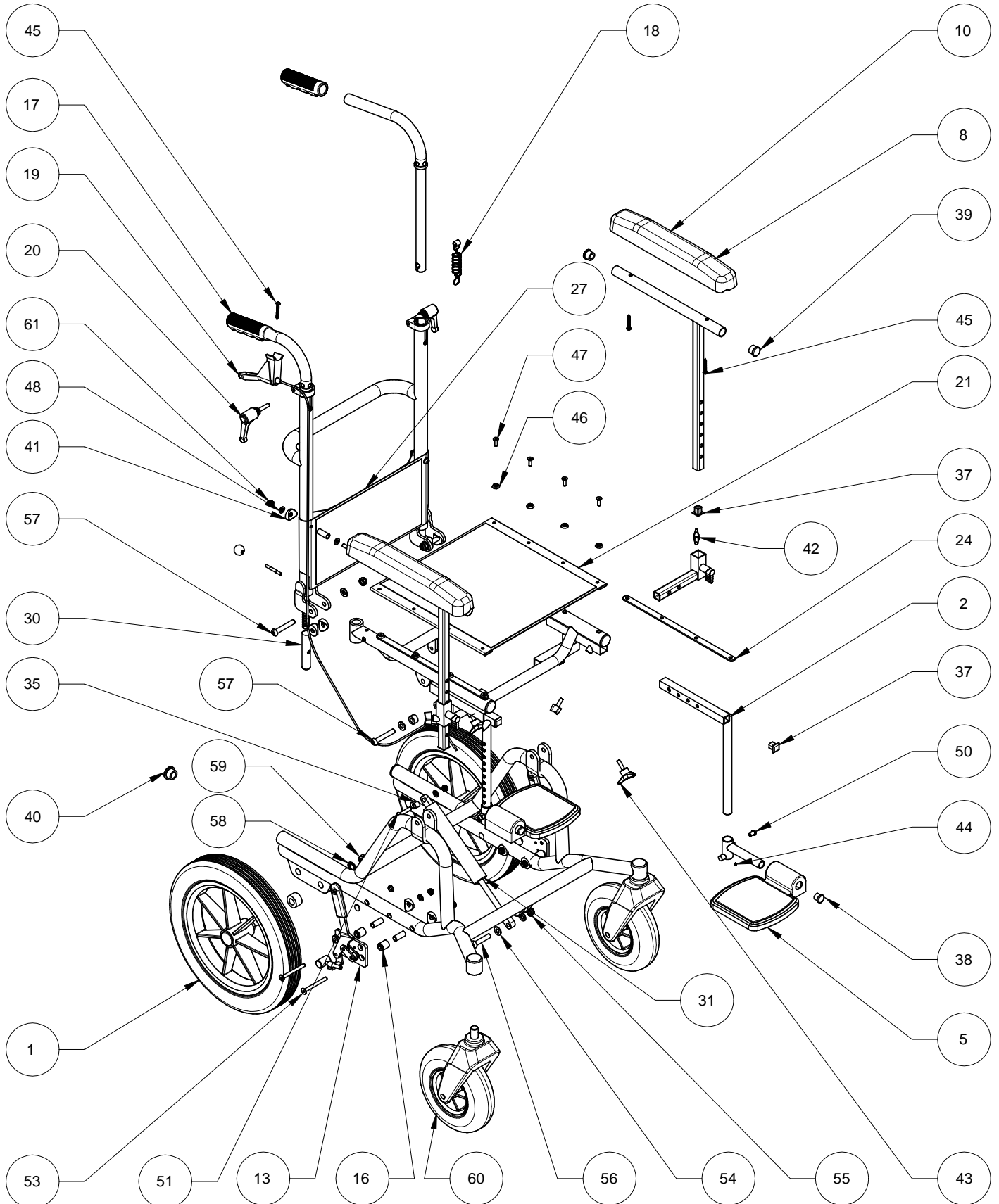


Aluminium Mini Tilt - All Models Parts List



Subject to technical alterations

Aluminium Mini Tilt - All Models

Parts List



Item Number	Part Number	Description	Qty Per Chassis
1	TTF153	Rear Wheel	2
2	TC0037	Footrest Complete Set 12"	1
3	TC0043	Footrest Complete Set 14"	1
4	TC0050	Footrest Complete Set 16"	1
5	TC041	Foot Plate 6" Wide (single - Fits 12" and 14" Mini Tilt)	2
6	TTF041	Foot Plate 7.5" Left Handed (for 16" Mini Tilt only)	1
7	TTF041A	Foot Plate 7.5" Right Handed (for 16" Mini Tilt only)	1
8	TC0044	Armrest Complete Set 12" / 14"	1
9	TC0046	Armrest Complete Set 16"	1
10	TC001	Armrest Pad 12" / 14"	2
11	TTF001	Armrest Pad 16"	2
12	TC018	Brake Assembly 12" / 14" Left Handed	1
13	TC019	Brake Assembly 12" / 14" Right Handed	1
14	TTF018	Brake Assembly 16" Left Handed	1
15	TTF019	Brake Assembly 16" Right Handed	1
16	-	Brake Spacer Bushing (shown for reference only)	4
17	-	Push Handle (All sizes) (includes safety cable and grip)	2
18	-	Push Handle Safety Cable (shown for reference only)	2
19	TC7300	Tilt In Space Lever and Cable	1
20	TC090	Push Handle Locking Lever	2
21	TC6030	Seat Canvas 12"	1
22	TC6035	Seat Canvas 14"	1
23	TC6039	Seat Canvas 16"	1
24	TC6359	Seat Canvas Rods 12" (pair)	1
25	TC6365	Seat Canvas Rods 14" (pair)	1
26	TC6366	Seat Canvas Rods 16" (pair)	1
27	TC6023	Half Height Back Canvas 12"	1
28	TC6027	Half height Back Canvas 14"	1
29	TC6028	Half Height Back Canvas 16"	1
30	TTF0088	Locking Bolt Parts Set (includes bolt, spring, pin and ball knob)	2
31	TT7400	Gas Spring (Mini Tilt)*	1
32	TT7401	Release Head (784575)*	1
33	TT7402	Release Head Lever (783234)*	1
34	TT7403	M10 Lock Nut (012491)*	1
35	00549600002	Gas Spring Bushing	1
36	-	10mm Black Cap	4
37	TS6080	16mm Plastic End Cap (square)	4
38	SN0037	16mm Plastic End Cap (round)	2
39	TS6075	19mm Plastic End Cap	4
40	SN5370	25mm Plastic End Cap	4
41	TC413200	25mm M8 x 3mm Saddle Washer	10
42	TS6070	28mm M6 x 16mm Wing Nut	4
43	F76445	45mm M6 x 20 3 lobe hand wheel	2
44	-	No. 1 x 5mm pozi pan head self tapping screw	2
45	-	No. 4 x 40mm pozi pan head self tapping screw	5
46	-	M5 Cup Washer	8
47	SKTMB05X16Z	M5 x 16mm Countersunk pozi head screws	8
48	WAMA06Z	M6 form A washer	9
49	NNYMT06	M6 Type T nylock nut	3
50	SKTMB06X10Z	M6 x 10 Socket Button Screw	2
51	SKTMB06X30Z	M6 x 30 Socket Button Screw	1
52	SKTMB06X40Z	M6 x 40 Socket Button Screw	2
53	SKMCK06X060Z	M6 x 60 Countersunk Socket Button Screw	4
54	WAMA08Z	M8 Form A Washer	8
55	NNYMT08	M8 Type T Nylock But	5
56	SKTMB08X35Z	M8 x 35 Socket Button Screw	1
57	SKTMB08X50Z	M8 x 50 Socket Button Screw	4
58	-	M12 Locking Washer	2
59	-	M12 Half Nut	2

Subject to technical alterations