

Snug Seat On Snappi

Instructions for fitting play tray brackets to the nursery Snug Seat shell.



Play tray mounting parts (one side only)

Parts supplied:

2 x Play tray brackets (Handed, pre assembled)

2 x Mounting blocks

4 x M5 fixing screws

4 x M5 nylock nuts

1. Remove the seat cover.
2. Mark off the hole positions for the mounting block- to do this, offer the mounting block up to the outer lip of the Snugseat shell, with the rounded edges of the block facing the front of the seat as shown (Fig 1, right). Line up the back edge of the block with the edge of the lip on the shell, and align the upper hole of the block with the top straight edge of the lip on the shell as indicated by the dashed line. Mark the hole positions using a suitable pen / pencil. Do this for both sides of the Snugseat shell

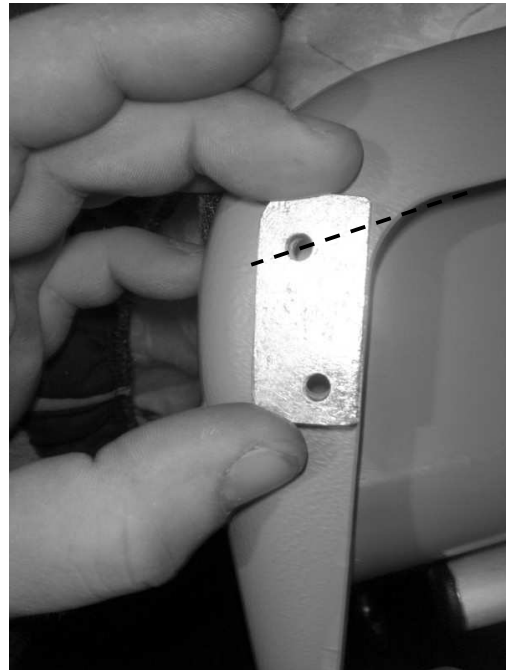


Fig 1 - Marking off the hole positions



Fig 2 - Place fixing screws through the bracket

3. Next drill through the outer lip of the Snug shell at the marked positions, using a 5mm drill. **DO NOT DRILL THROUGH THE INNER WALL OF THE SEAT SHELL.**
4. Next place the fixing screws into the holes in the bracket as shown (fig 2, left).

5. Hold the mounting block to the inner surface of the lip on the Snug shell, lining the holes in the mounting block to the holes in the shell (see fig 3, opposite).
6. Note that the play tray brackets are handed, and should be fitted such that the play tray fitting tubes point downwards (please see fig 6 at bottom of page for the picture of the complete fitted bracket).



Fig 3 - Line up bracket and mounting block with holes in the shell

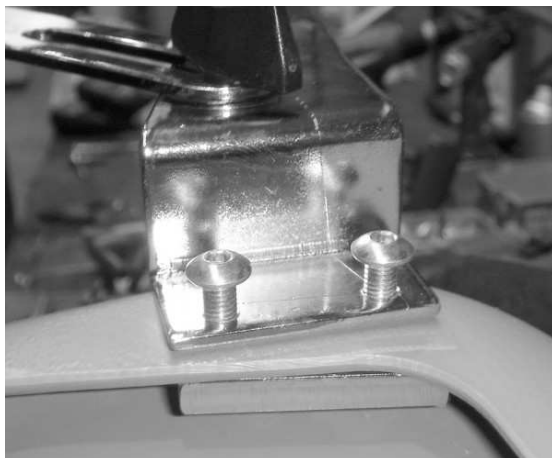


Fig 4 - Screw into the mounting block

7. Offer the bracket and screws up to the holes in the mounting block, and then screw through the shell into the block using a 3mm hexagon key (see fig 4, left).

8. Screw the fixing screws through the mounting block until 3 threads are showing (do not fully tighten), and then place the M5 nylock nut on the end of the threads. Holding the nylock nut in place with an 8mm spanner, screw the remaining thread of the mounting screw through the mounting block and into the nut until tight, and then tighten the nut using the spanner.
9. Finally, replace the cover onto the seat shell, slotting the play tray brackets through the openings provided in the cover.

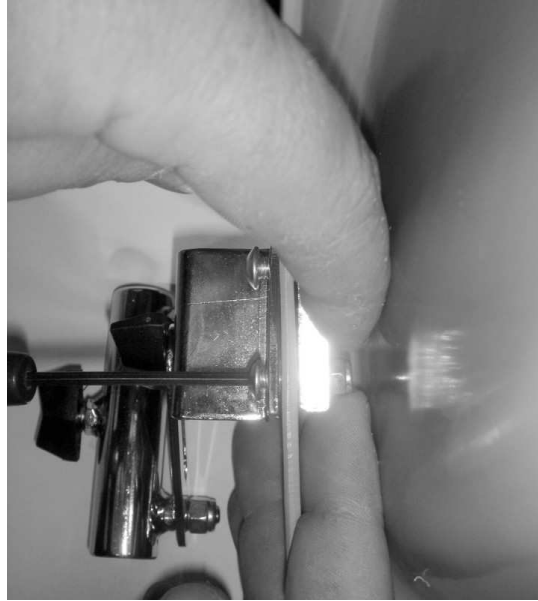


Fig 5 - Secure mounting block and fixing screw using the nylock nuts



Fig 6 – Play tray brackets fitted to the Snug Seat Shell